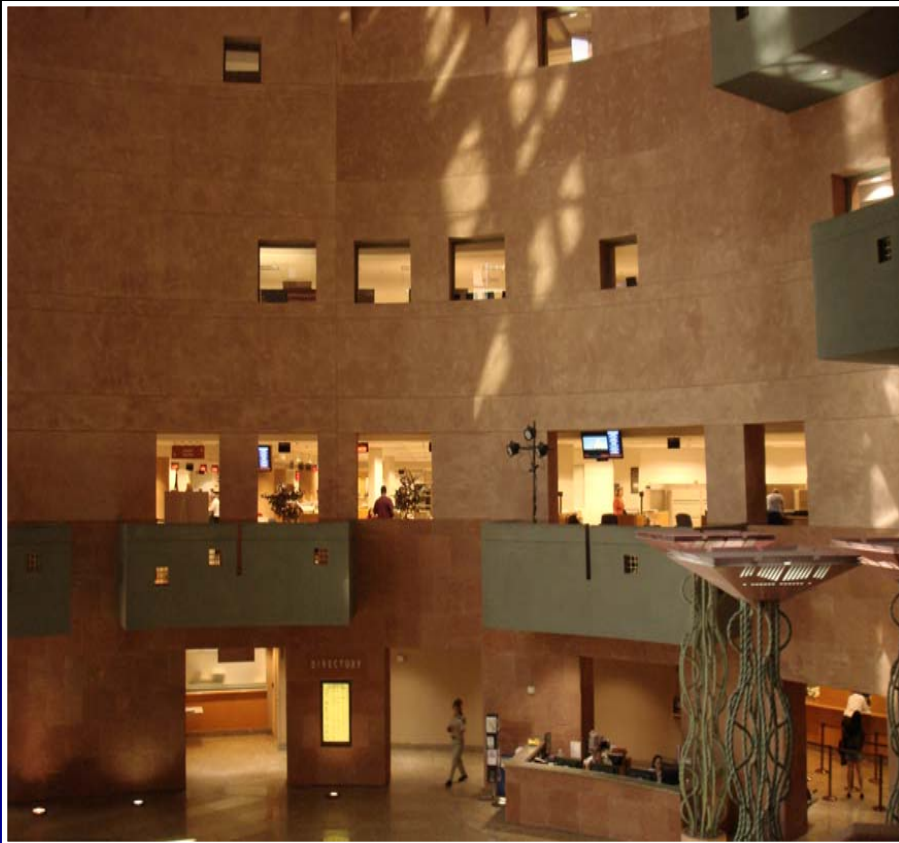


# Duroplex

A performance based  
decorative wall finish

# Appropriate for all types of projects and all types of environments

Municipal Buildings – Clark County (Las Vegas) and State of New Mexico Capital Bldg



# Country Clubs

## Congressional Country Club Bethesda



# Healthcare & senior living



# Hospitality – approved by most leading brands



# High performance in wet areas

Westin National, Arlington, VA

- 10 year labor and material warranty against mold or mildew
- Breathes – perm rating of 28



# Performing Arts



# Retail and store planning



POST  
LOGIC  
STUDIO  
POST

84 5TH STREET, BROOKLYN, NEW YORK 11215  
WWW.POSTLOGICSTUDIO.COM  
(718) 632-6390  
POSTLOGICSTUDIO@GMAIL.COM

---

**CLIENT:** VIA SPIGA, 263 BROADWAY NYC  
**DECORATIVE PLASTER WALL FINISH:** DURABILITY COLLECTION; DRY STONE  
 TO VIEW THIS SAMPLE AND THE REST OF OUR SAMPLES  
 PLEASE VISIT [WWW.POSTLOGICSTUDIO.COM](http://WWW.POSTLOGICSTUDIO.COM)  
 AND REFER TO THE COLOR AND TECHNIQUE COLLECTIONS






**PROJECT NOTES:**  
 THE DECORATIVE PLASTER WAS TRIELED ON SITE WITH A THREE STEP APPLICATION THAT WE DEVELOPED SPECIFICALLY FOR THE VIA SPIGA SHOWROOM. THE PLASTER WE CHOSE FOR THE DECORATIVE PLASTER WAS DURABLE, A SEASON PROOF AND VERY DURABLE PRODUCT PRODUCED BY TRIARCH INDUSTRIES. ALL THE WALLS WERE FITTED WITH MDF PANELS THAT WE APPLIED OUR FINISH TO. FOR FUTURE STORES WE WILL BE ABLE TO PRODUCE OUR FINISH ON MDF PANELING AND SHIP TO THE SITE. THIS WILL SAVE THE CLIENT TIME AND MONEY ON SITE LABOR COSTS.

---

**CHAIN STORE AGE MAGAZINE  
 RETAILER STORE OF THE YEAR**

**RETAIL STORE OF THE YEAR**

For its Best Retailer Innovation, Via Spiga brings the world's finest luxury goods to the East Coast through its Manhattan location in Midtown, New York. The store's design is a blend of modern and traditional, featuring a curved wall, a central atrium, and a sophisticated color palette. The store's design is a blend of modern and traditional, featuring a curved wall, a central atrium, and a sophisticated color palette. The store's design is a blend of modern and traditional, featuring a curved wall, a central atrium, and a sophisticated color palette.



**Sally Linn**  
 (NYC Top 100 Retailer)  
**Via Spiga**  
 New York City  
 Design: Triarch International Group, Inc. (NYC)



# High end condos



# durable & tough enough for airports



- 80% as hard as mild steel
- Improves the abrasion resistance of regular drywall
- Adds to the performance of higher performance & impact resistant board
  - Tested against abrasion and impact
- Material and labor warranty not to chip or delaminate

# leading color technology

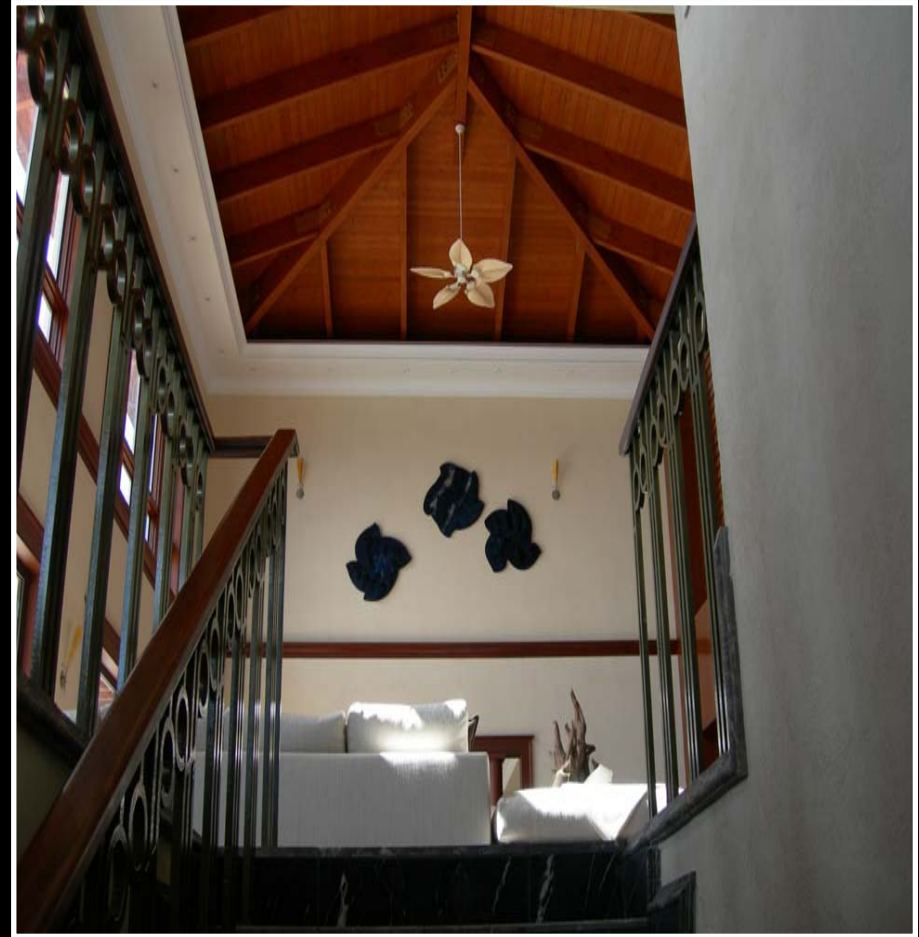
- Through color – integral
- Will not fade
- Zero VOC pigments
- Computer formulated colors and all formulas stored in database for future match back.



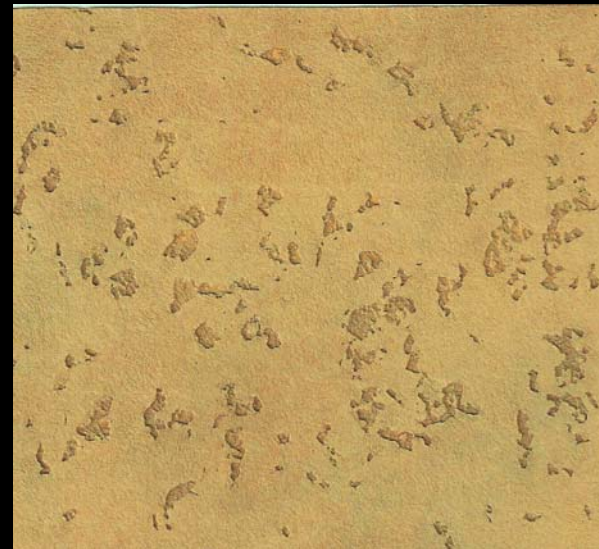
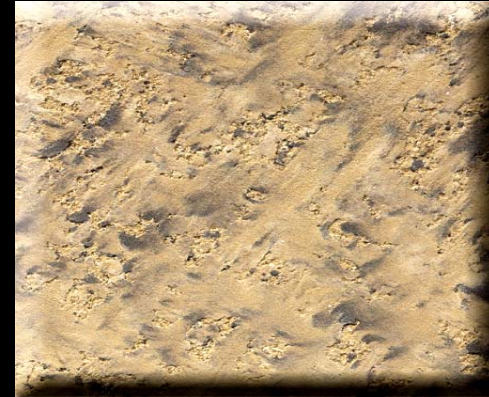
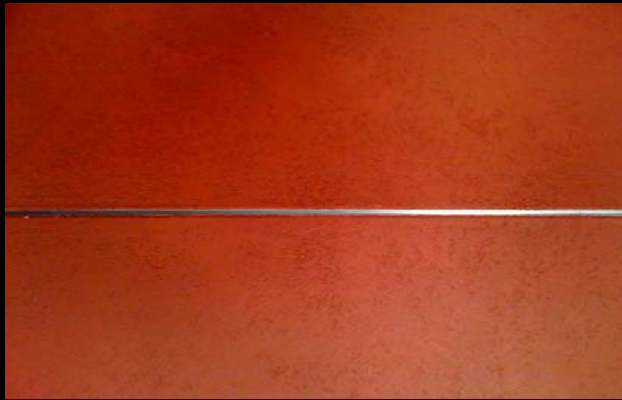
Works well in higher end residences providing a quality, long service life finish



# More residential



# Wide variety of patterns and colors



# Project samples in a wide variety of colors and patterns



**DUROPLEX®**  
Decorative and Protective Interior Wall Finishes

**TRIARCH**  
FINE ARCHITECTURAL FINISHES

- 10 YEAR PERFORMANCE & SURFACE MOLD/MILDEW WARRANTY
- SCRUBBABLE/DURABLE
- BREATHABLE
- INCOMBUSTIBLE AND NON-TOXIC
- NO SEAMS TO CURL OR PEEL

**DISCLAIMER:**  
THE INTENT OF THIS SAMPLE IS FOR DESIGN SELECTION CRITERIA ONLY WITH RESPECT TO COLOR AND TEXTURE. THE SPECIFIER SHOULD REQUIRE FIELD SAMPLES OR A MOCK UP BY THE INSTALLING CONTRACTOR FOR INSTALLATION QC PURPOSES.

3/31/10	CS#
ALEXANDRIA, DDM2 DSII	
B-PLASTEK- STORM CLOUD	
T-DDM2-AQ-STAINLESS STEEL	

**TRIARCH** A Division of Dryvit Systems, Inc. • One Energy Way • West Warwick, RI 02893  
www.triarchinc.com • 800-537-6111 • 401-822-4100 • 401-822-2984 (Fax)

# Strong sample support program

- Hundreds of samples available from stock
- Project specific sample generation
- Order samples through our website, our rep or call us directly
- Many samples cataloged

